

RONDO® insideR

april 2018

**BRINGING
THE OUTSIDE IN:
Westfield Chermside**

**COMMONWEALTH
LAW COURTS
Northern Territory**

**MELBOURNE CONVENTION
CENTRE
Victoria**

**INTERCONTINENTAL HOTEL
Western Australia**

PLUS MORE INSIDE...

**PRODUCT NEWS:
NEW SNAP-LOCK
& FAST-FIX NOGGINGS
JOIN OUR RANGE**



MEDIA RELEASE

RONDO[®]
WWW.RONDGLOBAL.COM

Tuesday 23rd January 2018

RONDO ACQUIRES USG BORAL NZ METAL BUSINESS

Rondo Building Services Pty Ltd has today announced the acquisition of the USG Boral metal business in New Zealand.

This deal brings together two of New Zealand's leading manufacturers of metal wall and ceiling systems and will substantially grow the Rondo New Zealand business providing us with additional manufacturing capacity and capability. This will enable Rondo to extend our product offer to include Exposed, Drywall Grid and Concealed Ceiling Systems further enhancing our market leadership position and reputation.

"This is an exciting acquisition for Rondo that will further enhance our market leadership positions in both New Zealand and Australia. It will provide substantial growth for our business in New Zealand and strengthen our Ceiling Systems offer to the market in both Australia and New Zealand through the utilisation of the DONN[®] Exposed Grid brand and their patented DX technology" **Greg Thomas, Rondo Executive General Manager.**

The completion of the acquisition of the USG Boral New Zealand Metals business is expected to take place on the 5th of February 2018.

For further media information, please contact;

Nick Molcisi: Rondo NZ Country Manager 021 654 449 – Nick.molcisi@rondo.co.nz

Melanie Picken: Group Marketing Manager +61 430 791 187 – Melanie.picken@rondo.com.au

ABOUT RONDO

Rondo is a market leader in the design, innovation and manufacture of internal and external wall and ceiling systems, along with complementary accessories for the Building and Construction Industry in New Zealand, Australia, Asia and UAE.

ABOUT USG BORAL

USG Boral is a manufacturer and supplier of gypsum-based wall and ceiling lining systems, mineral fibre acoustical ceiling systems, metal framing, joint compounds, high-performance panels and accessories throughout New Zealand, Asia, Australia and the Middle East.

Inside this issue:

PROJECTS

Westfield Chermside QLD	2
Kurrawa Surf Lifesaving Club QLD	4
ICC Sofitel NSW	5
Commonwealth Law Courts NT	6
Blue Cross Residential Aged Care Facility VIC	8
Melbourne Convention Centre – Stage 1 VIC	9
Intercontinental Hotel WA	10
Rose on Angove WA	12
Novotel Christchurch International Airport Hotel NZ	13
Manukau Bus Exchange NZ	14

PRODUCT NEWS

New SNAP-LOCK & FAST-FIX Noggings	16
-----------------------------------	----

PRODUCT UPDATES

New Reveal Bead lengths and sizes	17
QUIET STUD® now available in 0.75BMT	17
DUO2 supersedes DUOH	17
New 562 Universal Bracket	17

PROJECTS



Westfield Chermside [QLD]

BRINGING the outside in seems to have been the inspiration for one of the most forward-thinking Westfield Shopping Centres in Australia, Westfield Chermside. An extension to the original and dated centre, the new and improved shoppers' paradise fits in perfectly with the new breed of shopping centre that has sprung up around Brisbane.

Built by Scentre Group, Westfield, Chermside just north of Brisbane is now the second largest centre in Australia (measured by number of stores) as well as Scentre Group's biggest centre in their portfolio. Completed in April 2017, at a cost of \$355M, the extension has created an additional 33,000m² of retail space.

Reminiscent of some of the trendy malls in the United States such as Fashion Island in Newport, Los Angeles, Chermside captures the modern and airy, resort like architecture that encourages shoppers to experience rather than just brave their centre visits.

However, what makes Chermside unique isn't just the leafy green spaces or the outdoor pool water feature, it's also the innovative indoor ceiling that Rondo helped bring to life, together with North Australian Contracting (NAC).

The curved suspended ceilings, that features wavy 'skylights' meant the Top Cross Rail component had to be made to a radius that met the architectural specification.



This, in turn required the expertise of the Rondo Technical Services Team to ensure the wave, 'skylight' feature (using KEY-LOCK® Concealed Suspended Ceiling components) would actually work. Not only that, the Rondo Team also had to adhere to strict deadlines to make sure the material could be supplied to the project on time.

The 'resort precinct' includes a range of dining options including Brisbane's first, 'Betty's Burgers,' as well as other entertainment and lifestyle offerings. Scentre Group CEO Peter Allen said, "[Chermside] marks the delivery of the major project in our redevelopment pipeline for this year. Westfield Chermside is now the biggest centre in our portfolio, with the most comprehensive retail, lifestyle and leisure offer in Queensland."

Rondo products used in this project:

- **Steel Stud & Track**
- **KEY-LOCK® Concealed Ceiling System**
- **EXANGLE® Finishing Sections**
- **PANTHER® Access Panels**
- **Top Hats**

PROJECTS

Kurrawa Surf Life Saving Club [QLD]

THE Gold Coast Bulletin was right on the money when it described the new Kurrawa Surf Life Saving Club at Broadbeach on the Gold Coast as, “bigger and better.” Not only is it bigger, for the first time in more than half a century it can fit hundreds of surf boards in the basement (rather than spilling out the front door). Something that might seem trivial to you and me, but isn’t to be sniffed at considering the cluttered mess these boards can create at a beachside location.

This complex geometry of the internal and external ceilings was overcome thanks to the Rondo Technical Services Team who thought through the solution to shape tight bends and corners.

The project cost \$15M overall. The club has the capacity to seat more than 400 patrons as well as a super gym with equipment for rowers including an isometric trainer and a sled track for running.



Taking over 15 years from conception to completion and 13 months of actual construction (March to December 2017), Architect’s Arkfield made sure it was functional as well as modern.

However, as everyone knows design is nothing without practical planning to ensure it springs to life and in this case, Builder Paynter Dixon Ltd along with Allcoast Commercial Linings worked with Rondo to do just that.

Club President Michael McSweeney said the new surf club was, “well thought out, right down to the carpet.”

Rondo and Allcoast worked together to achieve the curved corners in the feature ceiling. Although a great success, it was initially a tricky scenario to tackle due to the difficult shape that a tiered, KEY-LOCK® Ceiling offers, including tight bends and corners. To form the curve in the ceiling, the contractor had to utilise plywood and cut to the same shape of the corner. Not only did this provide the desired effect, it added additional strength to the Rondo framework.

Furthermore, due to additional weight (because of the tiered feature ceiling) suspended from the 700 metres of Furring Channel, MDF was inserted into the Furring Channel to provide a more substantial fixing.



Rondo products used in this project:

- Steel Stud & Track
- KEY-LOCK® Concealed Ceiling System
- Top Hats

ICC Sofitel [NSW]

WATCH out Hong Kong, Sydney is fast becoming the most envious harbour skyline in the world. Enter, the new Sofitel Hotel Darling Harbour.

The new Sofitel is arguably the most exciting hotel opening in Sydney for almost 20 years. This luxurious home away from home is the first 5-star hotel to be built since the Sydney 2000 Olympic Games.

Representing the third stage of the \$2.5 billion Darling Harbour revitalisation, Rondo was given the chance to assist with the build through Contractor, Sydney Projects. Rondo's unrivalled ability to provide Seismic designs and our strong working relationship with Sydney Projects made choosing our products a no-brainer.

Importantly, this was the first major hotel project where seismic requirements needed to be addressed, and therefore Rondo supplied designs for internal wall partitions, ceilings, seismic walls and seismic bulkheads.

Levels 5-33 required seismic consideration and on level 34 of the building, the fire-rated ceilings and bulkheads presented some challenges that were soon overcome using the Rondo Technical Services Team's ingenuity in design and flexibility. The guest lift lobby ceiling also featured the KEY-LOCK® Concealed Ceiling System and separate stud framed coffers on three sides relying on bulkheads to provide extra seismic support.

Supporting the new International Convention Centre and overlooking Cockle Bay, the outstanding \$129M development by Builder, Lend Lease took just three years to complete (October 2014 – October 2017) and is now one of Australia's largest hotel establishments. Jointly designed by FJMT Sydney and Lend Lease Design, the project features 590 guestrooms and suites, all with 5-star views of Sydney harbour. Not to mention a rooftop infinity pool and helipad.

Rondo products used in this project:

- *Steel Stud & Track, including for Seismic application*
- *KEY-LOCK® Concealed Ceiling System, including for Seismic application*
- *Speed Panel Track*



PROJECTS



Commonwealth Law Courts [NT]

THE law has a new home in Alice Springs thanks to the revitalisation of the Commonwealth Law Courts. Located at 10 Parsons Street, Alice Springs, the new dedicated Justice Precinct will add much-needed facilities to the region, including a new Supreme Court which doubles the previous arrangement of one.

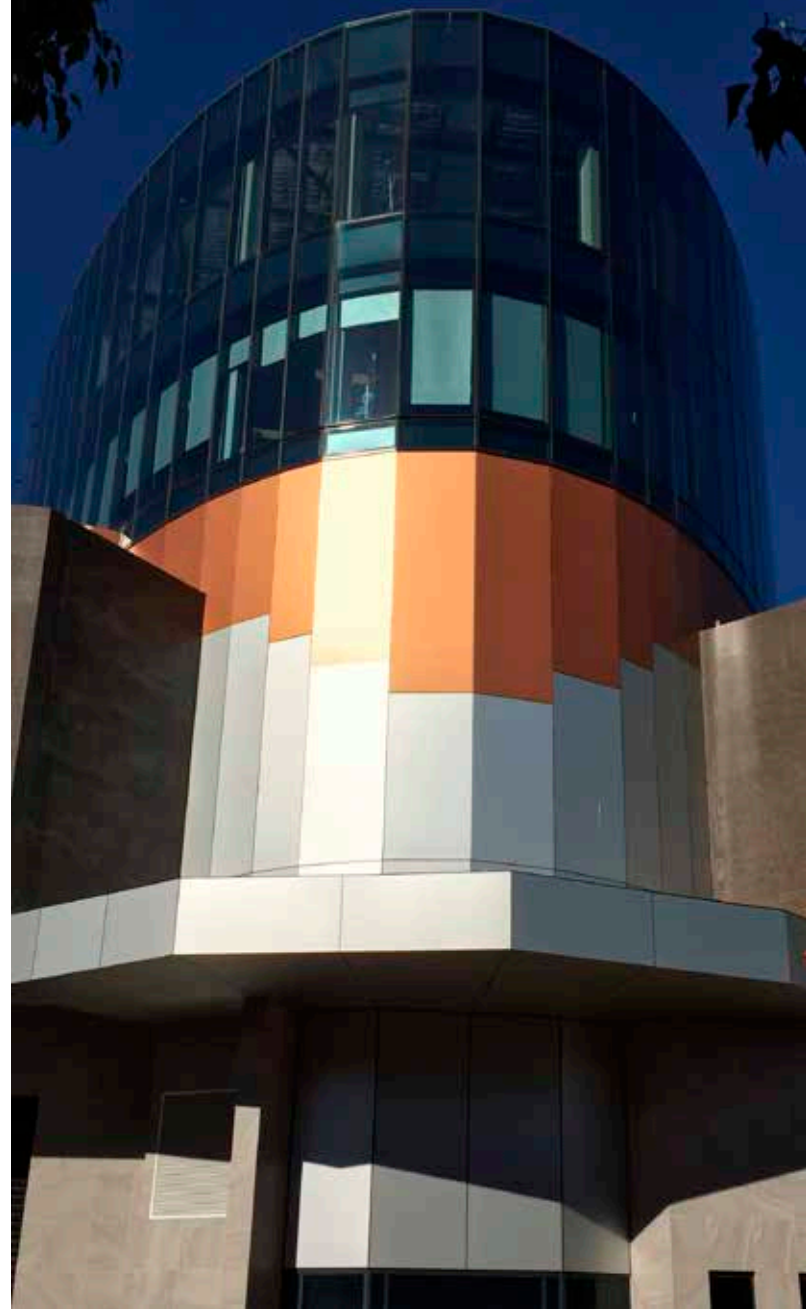
Spearheaded by Sitzler Constructions the \$18 million project began in 2014 and was completed mid-2017. Mark Bell (ex-Bell Gabbert Architects Darwin), instigated the detail required for such a unique building that now house's numerous law courts, offices and law enforcement facilities for the Commonwealth Government.

Rondo assisted Brett Watson Contracting in providing the featured elliptic curved detail that made the eye catching internal ceiling layout possible. Rondo supplied

our KEY-LOCK® Concealed Ceiling System to create the coffered ceiling treatments in the main atrium. The four-storey building is now the largest in Alice Springs and according to NT Attorney General & Minister for Correctional Services, John Elferink, it will future-proof the Northern Territory by enabling the Courts to “keep up with the workload for the next 50 years and give the local court building a much longer lifespan.”

Rondo products used in this project:

- **Steel Stud & Track**
- **KEY-LOCK® Concealed Ceiling System**
- **DUO® Exposed Grid Ceiling System**
- **EXANGLE® Finishing Sections**
- **PANTHER® Access Panels**



PROJECTS

Blue Cross Residential Aged Care Facility [VIC]

A NEWLY improved, three-level residential aged care facility is on the horizon in Box Hill, Victoria.

Situated at 40 Dorking Road, Box Hill is the site for a redeveloped Blue Cross Residential Aged Care Facility. Construction began on the refurbishment in February 2017 and was spearheaded by Builder, Buxton Constructions. By the time the development is complete in April this year, it will have been costed at approximately \$50M.

MP Group were charged with managing the installation and finishing of all internal and external walls and this is also where Rondo offered our support.

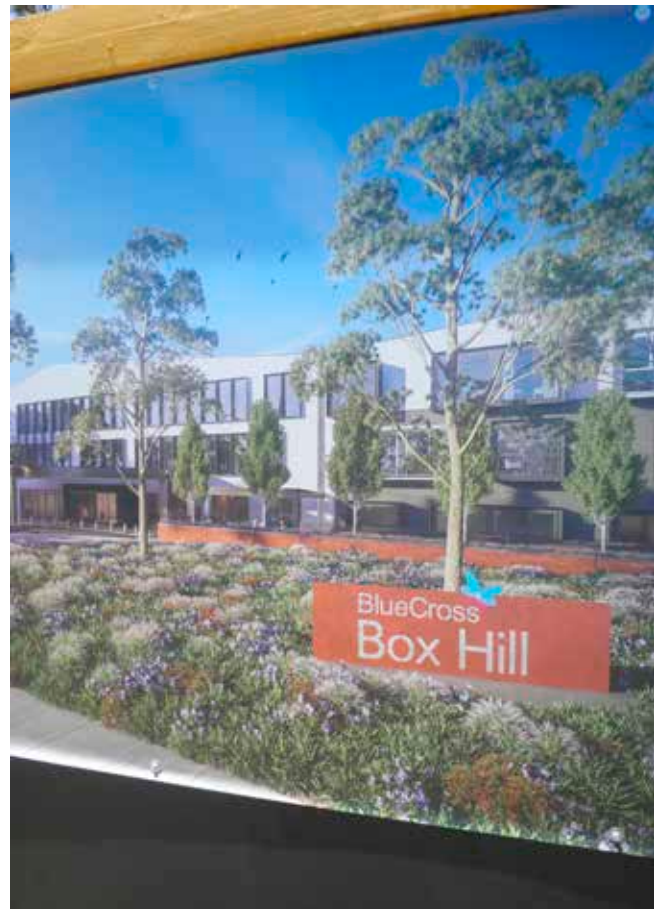
With the external structural steel framing having been installed 150mm out of position, Rondo's Technical Services Team came to the rescue and designed an external stud wall system using our MAXIframe® External Wall Framing System to 'fill the gap,' including design of special header bracing details to support the wall. Ultimately replacing the original timber external wall framing with the lightweight Rondo MAXIframe® System, providing simplicity of construction, lighter weight and far better structural integrity.

Designed by Billard Leece Partnership, the facility will consist of 221 bedrooms featuring large suites with outdoor terraces, a specially designed dementia unit, a café, cinema and resident community services hub. The building itself will be 3-storeys, plus a large basement for services with a carpark for 80 vehicles.

The redevelopment will be a welcome breath of fresh air for all residents and staff and will help with quality of life and providing a more modern, happy and healthy work environment. A wise move if you ask us.

Rondo products used in this project:

- **Steel Stud & Track**
- **KEY-LOCK® Concealed Ceiling System**
- **MAXIframe® External Wall Framing System**
- **EXTREME® PVC Beads**



MECE Melbourne Convention Centre – Stage 1 [VIC]

LOCATED at 1 Convention Centre Place & 2-26 Clarendon Street South Wharf, the joint design venture between Woods Bagot and Melbourne NH Architecture (formally B & N Group) is set to grow Melbourne's business and tourist capabilities to the highest possible standard. When MECE is complete in June this year, it will be the largest convention centre in Australia and breathe new life into Melbourne's South Wharf Precinct.

Beginning in October 2016, the project has financial support from both the Victorian Government (\$205M) as well as Plenary Group and its partners who are investing more than \$100M.

Probuild Construction were granted the building contract for this \$300M investment project and together with Express Interiors (one of Victoria's largest commercial contractors), Rondo is supplying extensive design support and inspections.

Rondo is working with Express Interiors to drop the 10.3 metre Curtain Wall Bulkheads that divide the exhibition areas. Rondo's Technical Services Team created a design option that eliminated the need for structural steel, therefore making it easier to install. Rondo also provided designs for stack walls for both the Banquet and Exhibition Halls to meet both height and acoustic requirements. Additional designs included for the acoustic ceilings, kitchen and kiosk walls.

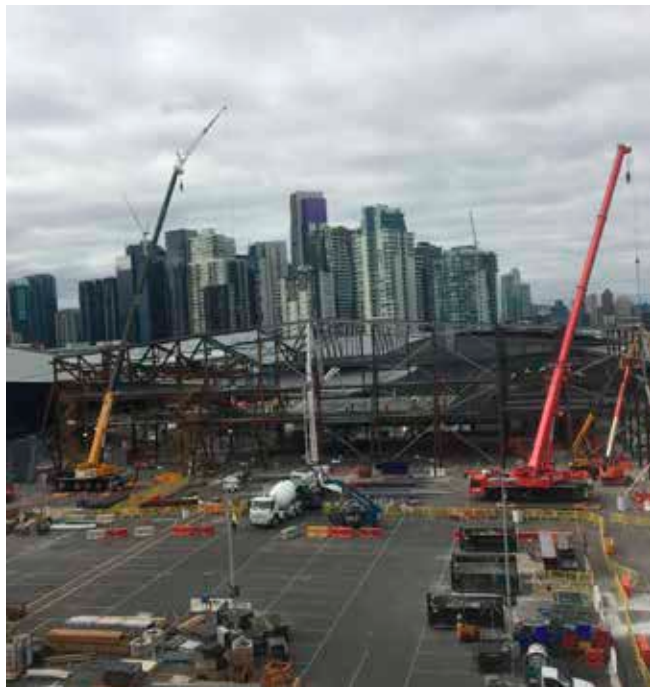
Included in the plan is infrastructure that will connect visitors and local traders with a new 347-room Novotel hotel and multi-deck car parking facilities, bringing forward the vision of Jeff's Shed and the South Wharf precinct to become a vibrant events and entertainment destination.

MCEC's expansion is expected to generate a \$167 million annual boost to the local economy, bringing an additional 74,000 international visitors to Melbourne each year. The expansion will enable MCEC to attract and host a range of new events and provide more spaces for the local community to gather, learn, connect and engage.

We look forward to seeing the finished product.

Rondo products used in this project:

- ***Steel Stud & Track***
- ***MAXiframe® External Wall Framing System***



PROJECTS



Intercontinental Hotel

[WA]

A STATE of great elegance has arrived in Perth with the finalisation of the new Intercontinental Hotel on the corner of Hay and King Street.

After 18 years of being the Rydges Hotel, in 2015 the site became the location for the new Intercontinental. In November 2017, after two years of redevelopment the new and much improved hotel, was unveiled.

Together with Architect; Woods Bagot; Builder; Built and Ceiling & Wall Contractor; Future Carpentry and Ceilings, the project was completely re-designed. The former 17 floor hotel was gutted and reduced back to the base building and then rebuilt from the inside, with only the windows and walls retained.

Now with 240 rooms, the new 5-star Hotel definitely suits its surroundings, situated amongst Perth's high-end brand shopping precinct.

Rondo worked closely with Future Carpentry and Ceilings to meet the project requirements on time and were chosen due to our strong 15-year relationship.

However, the \$70M re-development wasn't without its challenges, for instance, the speed by which the building went up meant there was no time to waste. While speed is usually a positive trait in the construction industry, as it usually means you stay on or ahead of schedule it can also be tricky to keep up with.

In this case, the contractor had to work full steam ahead to keep up with demand. This is where Rondo's efficiency and technical support enabled work to continue with as little delay as possible.



Clear and consistent communication from Future Carpentry and Ceilings was integral, professional and extremely helpful to Rondo when forecasting demand and product requirements for this project.

Containing four restaurants and bars, a club lounge and six meeting suites, according to Woods Bagot the redevelopment has definitely installed a new, "a sense of Perth" within the city.

Rondo products used in this project:

- ***Steel Stud & Track***
- ***KEY-LOCK® Concealed Ceiling System***
- ***EXANGLE® Finishing Sections***
- ***PANTHER® Access Panels***

PROJECTS

Rose on Angove [WA]



COINED as the newest urban development in North Perth, this boutique 5-storey apartment, Rose on Angove designed by Architects Bollig Design is a little gem.

Situated on the corner of Angove and Fitzgerald Streets in the prominent and renowned coffee and café strip of Angove Street, the \$15 million development consists of 39 one and two-bedroom apartments. The venture is said to be appealing to buyers who want to enjoy the wonderful lifestyle inner-city living has to offer, yet in a suburb with a real community at an affordable price.

After commencing work in January 2016, it only took Builder, Finlay Group 20 months to complete.

To ensure the building was delivered on time and in full, not only did Finlay's little brother, EXZO manage the wall and ceiling contract (through their subsidiary, Finlay Group), they were also responsible for all other aspects that a Contractor normally manages on a project, such as complete co-ordination of all service trades and consultants.

EXZO is the fifth largest Construction Contractor in Perth and their relationship with Rondo has been built on Rondo's past technical support provided to the New Children's Hospital (NCH) project.

EXZO were very happy with Rondo's serviceability and highlighted the convenience and ease that Rondo products provided them onsite. A special mention should also go to John's Building Supplies who were an additional key player in supplying Rondo material.

With three shops, a restaurant, 39 residential and 11 visitor car parking bays (among other features) this residence is a testament that affordability doesn't need to come at the expense of design.

Rondo products used in this project:

- **Steel Stud & Track**
- **KEY-LOCK® Concealed Ceiling System**
- **EXANGLE® Finishing Sections**
- **Top Hats**



Novotel Christchurch International Airport Hotel [NZ]

TRAVELLING isn't always as glamorous as it seems and sometimes you just need to lay your head somewhere comfortable and convenient, in between flight schedules.

The Novotel at Christchurch's International Airport aims to deliver exactly that and after opening late last year, this 200-room hotel is helping ease traveller exhaustion.

Designed by Warren & Mahoney Architects, the 4.5 star, \$80M project has helped compensate for the increased passenger numbers coming through Christchurch. Built by Fletcher Construction and sub-contracted to Maven Interiors the building is the ninth Novotel branded hotel in New Zealand.

Rondo was asked to deliver a full external and internal framing solution to the Novotel Airport project. It's tight construction schedule called for out of the box thinking promoting smarter design and onsite installation efficiencies.

Traditional timber frame construction for external façade was immediately challenged due to the high material and labour content required to complete a code compliant installation.

To combat this, Rondo MAXIframe® External Wall Framing System was used throughout the project, providing significant cost savings due to faster installation time with less labour required and reducing material wastage compared to the timber alternative.

In collaboration with Christchurch based Engineering firm, BVT, Rondo's Technical team provided a wind and seismic driven design for the external façade framing, leveraging Rondo's high capacity MAXIjamb® Studs, Slotted Deflection Head Track and 1.15 BMT Steel Stud, to offer an external framing solution. This required only 1 row of horizontal nogs for heights of up to 3 metres and 2 rows of horizontal nogs for external walls over 3 metres.

The interior walls and plasterboard ceilings were also designed to meet site specific wind loads and ULS seismic loads in accordance to the latest amendments to NZS1170 part 5.

Studs were also manufactured specially to site specific size, to promote faster installation and minimal material wastage. Additionally, TRACKLOK brackets were used throughout the project to manage both partial height partitions and ceiling braces in the plenum space, promoting a consistent and effective approach to seismically restrain suspended ceilings and partition walls.

With latest estimates from Christchurch & Canterbury Tourism indicating that Christchurch currently has approximately 800 hotels rooms fewer than what is needed to serve current tourism levels, let alone future growth – the Novotel at Christchurch Airport is a much-needed development for the area.



Rondo products used in this project:

- *Steel Stud & Track*
- *KEY-LOCK® Concealed Ceiling System*
- *MAXIframe® External Wall Framing System*
- *Shaftwall One-Way Erected System*

PROJECTS



Manukau Bus Exchange [NZ]

Public transport enables millions of people to travel around the world at relatively low expense and is vital to help cities remain efficient as their population grows.

Therefore, as the greater Auckland area continues with its plan to majorly strengthen its public transport infrastructure, the newly opened Manukau Bus Exchange will be a major hub for South Auckland.

Consisting of 23-bays, the new bus station is located right next to the existing Manukau train station. The bus station itself is like most buildings in shape, but it's the bold statement of the "bird beak" roof that grabs attention.

Two firms, Becker and Cox Architects worked together to create the 21 striking "sawtooth" designed bays, which is a nod to the Hamburg Central Bus Station and cleverly combines local and cultural history.

The new bus network for South Auckland will significantly improve public transport options for many people in the area. A key feature of the network is about making it easier to transfer between services and one of the main places that will happen is in Manukau – one of Auckland's

most important regional centres. Altogether, 15 different routes will stop at or pass through Manukau making it one of the busiest transport locations in New Zealand

NZ Strong were given the Builder's contract and together with Interior Contractor, Prime Construction were responsible to deliver the \$26M transport hub by the second quarter of 2018.

Timber features were used throughout the project, with Decortech acoustic panels used to clad both internal and external ceilings. Rondo, in collaboration with BVT Engineering was engaged to provide design assistance for all external soffits/ceilings, internal walls and ceiling framing.

Site design parameters, with very high wind loadings reaching 2.6kPa, called for the introduction of very specific framing solutions. Ultimately delivering a no compromise code compliant installation for the client, Auckland Transport.

Rondo and BVT used a combination of heavy gauge stud framing and the medium gauge Top Hat System to provide a framing structure for the installation of decorative acoustic timber panels throughout the external bus bays and the internal ceilings.



Working closely with the installer, Rondo and BVT overcame numerous design and installation challenges from the very complex geometrical shapes of the roof structure, ultimately producing a PS1 design, offering on-going site inspections to monitor install progress, and a full PS4 post construction sign off; all in all, providing peace of mind to Prime Construction, NZ Strong, Auckland Transport, and most importantly, all future users of this incredible new transport facility.

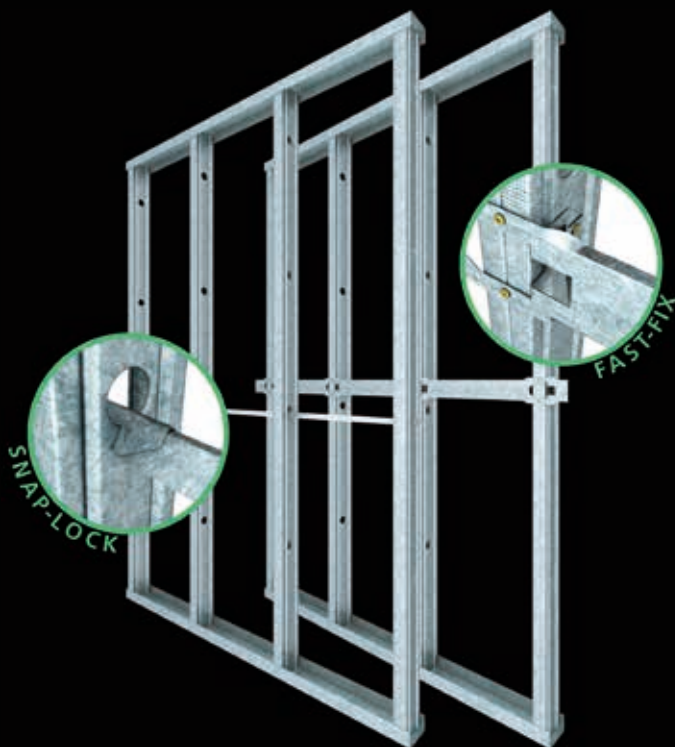
Rondo products used in this project:

- ***Steel Stud & Track***
- ***Top Hats***



PRODUCT NEWS

Clever. Quick. Two New Noggings Join the Rondo Range



When it comes to selecting a Noggling for your internal or external wall framing, you can't go past the Rondo range.

With the best Noggling solutions on the market today, and each one designed to suit a specific application, you'll find what you're looking for.

Whether it's Noggings that can be fitted during or after installation of Wall Studs, the Rondo range gives you options for both.

With this in mind, it's time to introduce our two newest Noggings:

SNAP-LOCK NOGGING®

Both of our new Noggings can be fixed *after* the Stud & Track Framing has been installed, making installations quicker and reducing in labour costs. *Clever and quick.*

Here is a list of just some of SNAP-LOCK's advantages:

- The SNAP-LOCK Noggling® is specifically created for use with Rondo Light Gauge Studs (0.50 & 0.55bmt)
- Its shape is a perfect match for installing into the bell-mouthed service hole in Rondo Light Gauge Studs
- SNAP-LOCK Noggling® simply clicks into the service holes on lightweight wall framing
- It is produced in sizes to suit 300, 400, 450 and 600mm Stud centres
- It comes with handy installation details that you can find on our website.

FAST FIX NOGGING®

You'll also find the FAST-FIX Noggling® is a great addition because it:

- Suits any Stud size and all typical Stud applications, whether it's single, boxed, back-to-back or staggered stud configurations
- Can be used with both Rondo QUIETSTUD® and DUPLEX Stud® profiles
- FAST-FIX Noggling® can be face-fixed or installed using the braced bent-out tabs to screw to the stud webs
- It is produced in sizes to 300, 400, 450 and 600mm Stud centres
- You can learn how to install it by simply visiting our website.

These two new Noggings will add to the three versions Rondo already offer:

CONTINUOUS NOGGING TRACK

This popular choice can be fitted to the Stud framing in one length, or individual Noggings can be cut from the Track. This Noggling Track can be produced in 0.70bmt to suit all Stud sizes, except 150mm Studs, which are produced in 0.75bmt for additional support.

DOUBLE PUNCHED NOGGING TRACK

This Noggling is utilised for more complex situations, where a back to back stud set out is required or where our innovative MAXIjamb® or DUPLEX Stud is being used. While similar to the standard Noggling Track, the Double Punch has a much larger punch out to fit the wider Stud arrangement, which replaces the need to cut and notch Standard Noggling Track. Therefore, reducing time spent on site (and that's got to be a good thing).

CONTINUOUS NOGGING BRACKET

Where ply or timber Noggings are required, such as to support heavy cupboards and flat screen TVs, the Rondo Continuous Noggling Bracket can be utilised.

And...if you'd like more information on our Noggings, be sure to get your hands on our recently released Rondo Noggling Systems Design Manual which covers all our Noggling solutions and their applications. It's available to download now from our website.

PRODUCT UPDATES

New Reveal Bead Lengths

We know time and cost savings on site are important to you. That's why we've decided to increase the length of our 3000mm length Reveal Bead to 3100mm and our 3600mm length Reveal Bead to 3700mm.

For no extra charge, we are offering you an extra 100mm of product, all with the aim of easing installation, reducing wastage and of course, saving you time and money.

...and New Sizes

You asked and we delivered. We've officially added more sizes to our Reveal Bead range to provide you with an even great range to choose from.

The new sizes include 30, 40 and 45mm widths that will be available in 3100 and 3700mm lengths.



QUIET STUD® now in 0.75BMT

Given the popularity of QUIET STUD®, we knew it was time to offer you a more comprehensive selection and have introduced a medium gauge 0.75BMT QUIET STUD® to our Acoustic Wall Stud range.

The increased metal thickness will allow for greater wall heights and will be available 2700, 3000, 3600 and 4800mm lengths.

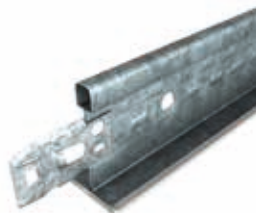


DUO2 supersedes DUOH

DUO2 will now be produced in the same gauge as the DUOH, which will no longer be available.

Customers currently buying DUO2 will get a better product for the same price, while customers currently buying DUOH will get the same product for a cheaper price.

New DUO2 packaging will be rolled out reflecting the change.



New 562 Universal Bracket

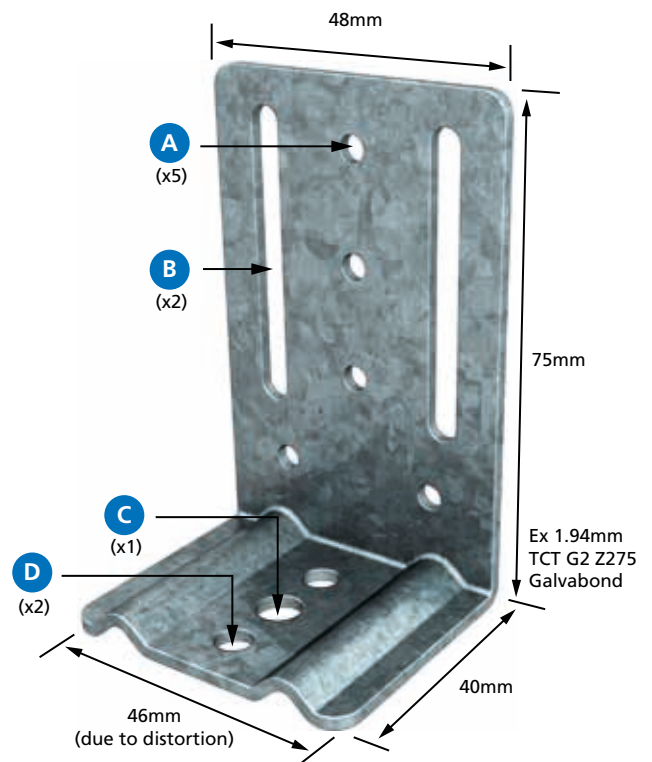
We recently introduced our 562 Universal Fixing Bracket, designed for use in 64, 76 & 92mm standard internal steel stud framing. Not only that, it can also be used in the new DUPLEX Stud System®, making it perfect for door openings and glazing in internal wall framing applications, where you would typically need to install a boxed stud configuration.

This bracket has multiple functions across various installation scenarios...all designed to make your job easier.

The 562 Clip is suitable for four specific purposes:

- Top and bottom fixing for door jamb studs when additional support required
- Supporting internal glazing framing
- Securing bulkhead framing
- Mounting bracing struts to structures

Buying one product for a variety of uses means you save time by limiting the unnecessary effort that comes from fiddling with different brackets for various installations on site, making your job easier and minimising wastage.



FIXING HOLES AND SLOTS: KEY

- A: 5 holes x 4mm diameter to suit 8g Wafer Head Screws
- B: 2 slots x 46 x 4.8mm to suit 10g Hex or Wafer Head Screws
- C: 1 hole x 7mm diameter to suit HILTI HUS3-H 6 x 60mm Anchor
- D: 2 holes x 5.5mm diameter to suit 12g Hex Head Screws

For more information on any of these updates, please visit the blog post section of our website at <https://www.rondo.com.au/blog>

TWO SMART NEW WAYS TO USE YOUR NOGGING.



IT'S A WHOLE NEW APPROACH TO FRAMING. CLEVER. QUICK.

Designed to save both time and money, our smart new noggings will change the way you do framing forever. Both can be fitted **after** the Stud and Track is installed, with our SNAP-LOCK Noggling® simply clicking into the service holes on lightweight wall framing, while our FAST-FIX Noggling® can be either face-fixed or installed using the braced bend-out tabs to screw to the Stud webs.

Find out more by visiting our website.

RONDO®
www.rondo.com.au

