

EXCITING
TRANSFORMATION
IN SYDNEY:
Darling Harbour
Live

NEWPORT RESIDENCE
Queensland

BANKSIA POINT APARTMENTS
Victoria

I-FLY
Western Australia

PLUS MORE INSIDE...

PRODUCT NEWS:
WHEN YOU NEED
TO FRAME A BULKHEAD



Inside this issue:

PROJECTS

Darling Harbour Live NSW	2
98 Kirribilli Avenue, Kirribilli NSW	4
Western Sydney University NSW	5
Newport Residence QLD	6
Whitehorse Towers VIC	8
Banksia Point Apartments VIC	10
Scape 393 VIC	11
I-Fly Belmont WA	12
Stirling Cross Apartments WA	13

PRODUCT NEWS

When you need to frame a bulkhead, we have the solution	14
--	----

UPDATES

Rondo becomes CPD accredited	17
Rondo VIC's New Site	17
Rondo's Partnership with KUC 2017	18



We fully support great designs.

- ✓ Expert technical advice from our Professional Engineers
- ✓ Design-R Specifications with customised designs
- ✓ NatSpec Branded Worksections on Walls, Ceilings and Access Panels
- ✓ CPD Presentations offering formal points (see page 17 for details)
- ✓ Case Studies and White Papers
- ✓ Downloadable CAD files

To learn more, visit www.rondoglobal.com

RONDO[®]

Rondo Building Services Pty Ltd. ABN 69 000 289 207.

Photo: Crown Towers, Perth. © George Apostolidis



Darling Harbour Live [NSW]

EXCITING and game changing – these are the words that come to mind when you think of Rondo’s involvement with the Darling Harbour Live Project.

Commencing in June 2015, this 20-hectare transformation of the Darling Harbour precinct was \$3 billion plus in the making and includes:

- Australia’s premier integrated convention, exhibition and events destination known as the International Convention Centre Sydney (ICC Sydney)
- A luxury hotel with approximately 600 rooms

Designed by leading architects Hassell and Populous, the project is predicted to generate \$200 million annual economic benefit for the NSW economy.

Partnering with four of its major contractor customers Rondo provided design solutions based on criteria supplied by the architects and project builder Lend Lease for all four buildings.

Due to the significance and complexity of the task, Rondo’s strong working relationships with these contractors ensured the build was delivered to the highest standard.

Brighton Australia were responsible for the Exhibition Halls and International Convention Centre, Foxville installed the ProdeMa External Composite Panel Cladding, Bigway constructed the interiors of the Theatre and Sydney Projects are the leading fitout contractors on the yet to be completed Hotel.

There were numerous challenges that arose throughout the duration of the project. Particularly, Rondo had to tackle head on the height of the exhibition halls and therefore the wall heights required. As the ceiling height was up to 20 metres in some instances, it required Rondo



*The project was completed in November 2016.
Rondo products supplied to the site included:*

- Stud & Track
- MAXIframe® System (including special length 92mm MAXIjamb® Stud
- QUIET STUD® Acoustic Wall System
- KEY-LOCK® Concealed Ceiling System
- DUO® Exposed Ceiling Grid
- EXANGLE® Finishing Sections
- PANTHER® Acoustic and Fire-Rated Access Panels
- Top Hats & Steel Angles supplied from Z600 coated material for the Prodema external cladding

to provide exceptional design solutions using lightweight framing systems; either heavy duty Stud and Track framing or in some cases our MAXIframe® System.

The external Prodema composite cladding system required extensive use of Rondo Top Hats and complimentary steel angles all of which, due to the buildings proximity to the harbour, were specified in Z600 coated steel.

PANTHER® Access Panels were also utilised for access to services within walls and ceilings.

With over 160 of our customer's staff onsite at any one time, Rondo successfully managed communications with the varied range of contractor requirements to ensure product was delivered safely to site, in full order quantities and on time hence ensuring potential delays were kept to a minimum. As a result, project builders Lend Lease were able to appreciate the value of the Rondo brand being used on their project.

*Photos: International Convention Centre, main and above;
Exhibition Hall, below.*



PROJECTS

98 Kirribilli Avenue, Kirribilli [NSW]



COMPLETED in early 2016, this \$3 million renovation of a harbourside red brick apartment building by Remedial Building Services required the re-rendering of the building's façade.

Long-time Rondo customer, Alan Bacic of City Projects, who was engaged to carry out the cement rendering contract, recognised that the building's location would require the use of a corrosion-resistant steel corner bead and chose the Rondo SR02 EXANGLE® Render bead to complete the job.

The Rondo SR02 corner bead is made from exceptionally corrosion-resistant high-polish 304 grade Austenitic Stainless Steel with a 2.5mm nib to produce sharp well-defined corners. Its 60mm wings comfortably accommodate up to 25mm of render depth and showcases its value.

This is a great example of the benefits of using a specialised Australian designed and manufactured product that will cope with the harsh environmental conditions that come with living in close proximity to the harbour.

Western Sydney University [NSW]

A GREAT space for learning has just been completed in the heart of Parramatta in Sydney's Western suburbs. Part of Western Sydney University, the new and improved Parramatta campus is a tasteful, modern design and a great reflection of the effort that went into its creation.

Contractor Interior Works was charged with the installation of the interior partition walls in this \$200 million Leighton Properties development that began construction in May 2015 with builder John Holland.

Designed by Architectus, the 15-storey building provides 26,500m² floor space to accommodate this university campus as well as commercial office space.

Rondo was called upon to provide its design expertise in the construction of steel stud partitioning, glazed partitions, studio walls which incorporated stylish parallelogram shaped windows, bulkheads over continuous glazing (some up to 14 metres in length), support for cavity sliding doors as well as ensuring support was provided in walls for everything from large flat screen TV's to white boards.

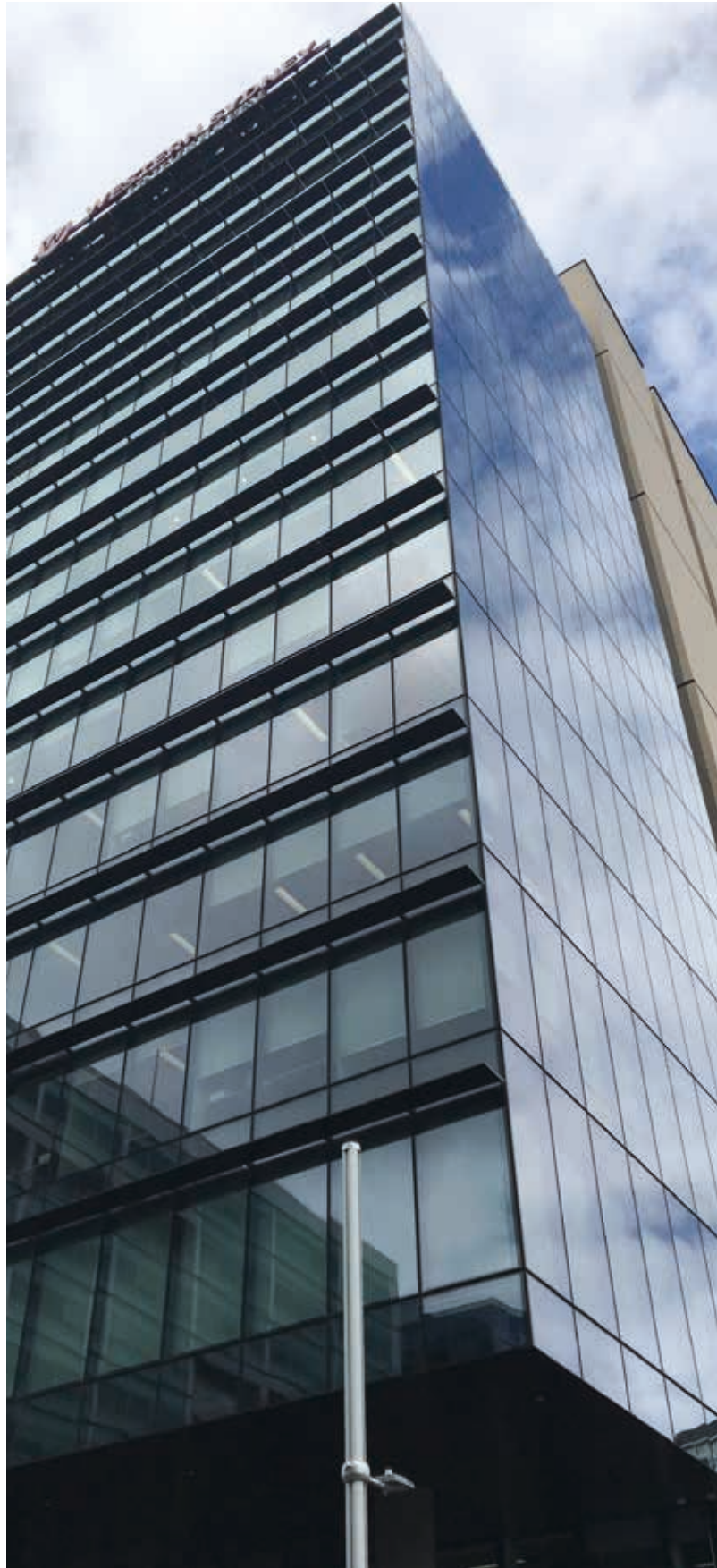
It was even necessary to design bulkhead framing with a staggered stud configuration to meet acoustic requirements. Similarly, many of these designs also had to incorporate Square Hollow Section (SHS) posts to meet structural requirements.

Rondo Technical Representative Max Dessmann worked closely with the contractor Interior Works and Rondo's Technical Services Team to develop the required design solutions.

The project was completed in October 2016 and was dubbed, one of "the most advanced university spaces in the world" by former Premier of NSW, Mike Baird. It is also another boost for the city of Parramatta, which is quickly becoming the destination of choice for many corporate businesses and families alike in Sydney.

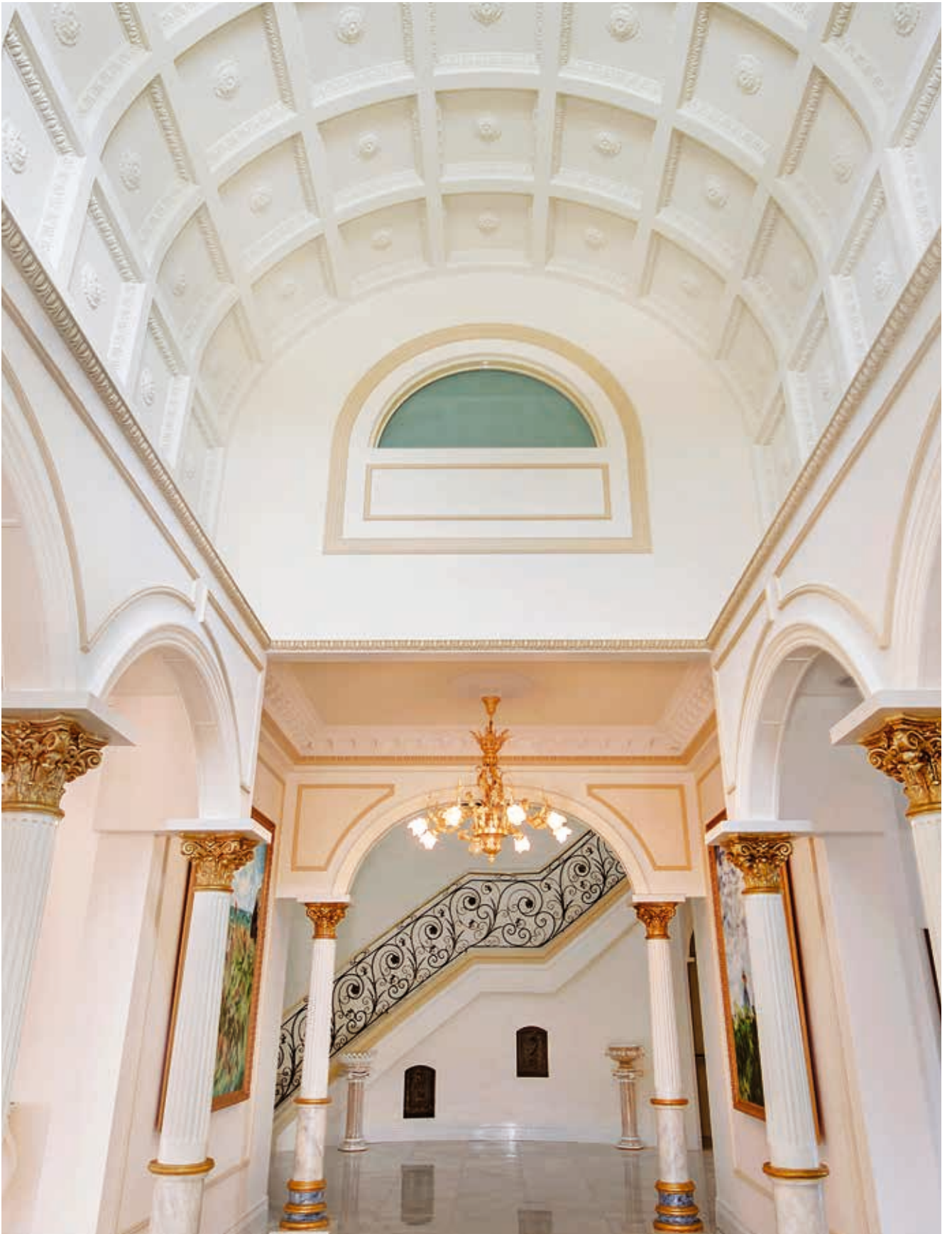
Products used on this project include:

- ***Stud & Track***
- ***EXANGLE® Drywall Finishing Sections***



PROJECTS

Newport Residence [QLD]



TAKING 18 months to complete, this residence in Newport on the shores of Moreton Bay is a true testament to the skills of builder DJG & Sons Ltd and their sub-contractor, CMG Plaster, using Rondo products. With no external professional architectural or design input, the owner's imagination and dedication together with the skills of his builder and plasterer produced a home built to a detailed design which is both immense and unique.

For instance, French inspired ornamental plaster with custom made cornice, columns, domes, ceiling roses and dado rails complement curved walls and barrel vaulted ceilings, the support for which was enabled by using the Rondo KEY-LOCK® Concealed Suspended Ceiling System as well as our EXANGLE® Finishing Beads.

The use of Rondo battens and furring channel on this high-end residential development ensured there was not a crack to be found on the internal ceilings particularly the colossal, curved ceiling on the project.

Chris Galbraith from CMG Plastering (who is also President of AWCI Queensland) stated, "if you want a good job, using battens and furring channel is the only way to go".

The project was featured on the front cover of AWCI ANZ's *On the Surface* magazine to commemorate his company winning the Decorative category of both the AWCI Queensland and the AWCI ANZ National Awards for Excellence in 2016. Chris also picked up the Best Overall Award at the Queensland AWCI Awards.

The following Rondo products were used throughout this residence:

- **Stud and Track**
- **KEY-LOCK® Concealed Ceiling System including our radiused furring channel to achieve curved ceilings**
- **PANTHER® Access Panels**
- **EXANGLE® Finishing Sections**



PROJECTS

Whitehorse Towers [VIC]



BIG projects require big team efforts and Rondo's ongoing involvement with Whitehorse Towers meant exactly that. Commencing in December 2015, this \$150 million build in Box Hill, Victoria required Rondo to provide design details for internal walls and external soffits.

Rondo supported Maxcon Pty Ltd through contractor L&Y Commercial for this project incorporating two 26 and 36 story residential towers of 551 apartments, an Art Series Hotel with 90 rooms, retail spaces and serviced offices. Due to the large-scale nature of the build, our customer was very satisfied with Rondo's ability to provide quick turnaround times for crane lifts as well as our efficient and effective operation of installation and delivery of goods on site, on time.

Designed by Peddle Thorpe Architects, this project required Rondo to supply product for the internal and external walls from light, medium and heavy duty 62mm and 92mm Stud, the internal ceilings using our KEY-LOCK® Ceiling and linings to masonry walls using Rondo Furring Channel. The two residential towers of the project consumed a considerable quantity of Rondo wall and ceiling framing materials in their total of 62 floors.

This project would not have been a success without the Rondo Network Partner and the VIC Team and is expected to be completed in January 2018.

Rondo products supplied to this project included:

- ***Stud and Track***
- ***KEY-LOCK® Concealed Suspended Ceiling Systems***
- ***EXANGLE® Finishing Sections***



PROJECTS

Banksia Point Apartments [VIC]

BEGUN in January 2016, Banksia Point Apartments will be one of the most desirable addresses in Victoria when completed this year.



Rondo has been assisting contractor T & Y Interiors and builder SJ Higgins with this \$10 million project in Rosebud along the Mornington Peninsular for over 12 months and upon completion this property will be one of the first multi-residential properties positioned along this idyllic coastline.

Comprising of forty 1, 2 and 3-bedroom luxury apartments designed by architects, Shaw 4 Design and Jacob Thomas & Associates, the property will not only include residences but a ground floor retail area incorporating two restaurants and three cafés overlooking Port Phillip Bay.

“Although not one of the biggest projects we have completed, it certainly had its complexities” commented Charlie Khoury, Rondo’s Business Development Manager in Victoria.

For instance, due to the sheer weight of the stone cladding to be placed on the external walls and the large external door openings, Rondo’s design had to utilise heavy duty 150mm x 1.15BMT Stud and 150mm MAXIjamb® Stud.

Given this specific requirement for the project’s external walls, Rondo proved it could handle virtually any design brief it was given. The external wall designs provided by the Rondo Technical Services Team together with regular site visits by our Rondo Technical Representative to monitor progress provided both its customer T & Y Interiors and Project builder SJ Higgins with the peace of mind that Rondo’s attention to detail was second to none and would be followed through to completion.

Rondo products being supplied to this project include:

- **150mm heavy duty MAXIjamb® Stud for external openings**
- **150mm Stud for the external wall framing**
- **64mm and 92mm lightweight stud for internal walls**
- **KEY-LOCK® Concealed Ceiling System**



Scape 393 [VIC]



A NEWLY commenced development for student housing, 393 Swanston Street, located in the heart of Melbourne is set to be valued at \$400 million by its completion in January 2018. UK-based Scape Student Living has set its sights on the new generation of University student housing and wants to transform the idea of student digs from cramped, dishevelled lets, into a home away from home.

The builder, Built, along with the contractor, Expoconti, and architects, Denton Corker Marshal, will be working with Rondo to ensure all briefs are met to the highest standard. Rondo representatives are visiting the site weekly to perform site inspections in order to ensure the project progresses smoothly.

As the project is in its infancy, only three levels have been completed so far. However, when signed off, this project is expected to contain 763 apartments, that's over 47 levels that will provide accommodation for RMIT University students close to the university's main campus.

To this project Rondo is supplying:

- 64mm x 0.5BMT Stud & Track Chase Wall Systems for the intertenancy walls
- 92mm QUIET STUD® Acoustic Wall System for corridor walls

PROJECTS

I-Fly Belmont [WA]



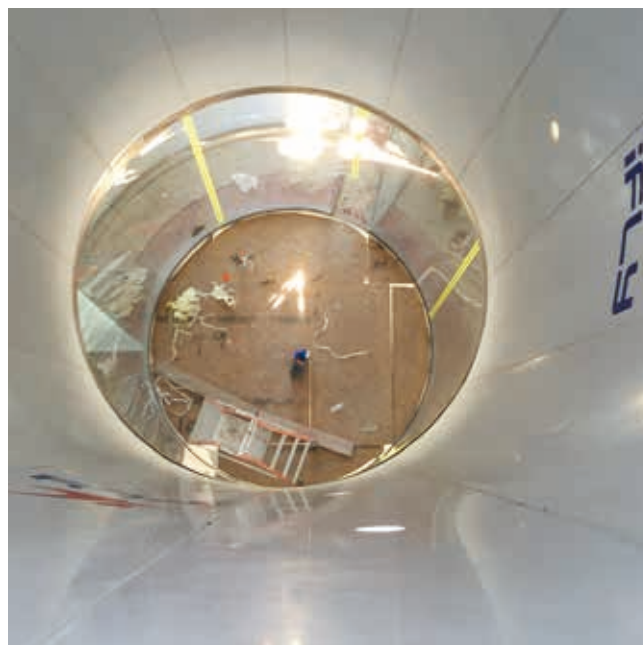
SKY dive enthusiasts now have a new facility to promote their passion in Western Australia with the new I-Fly site in the Perth suburb of Rivervale, which is conveniently located on the main route to the international and domestic airports. After only ever having one site in the Southern Hemisphere (located in Sydney's west), a new site development was approved with builder Metrowest chosen to make it into a reality.

Working directly with sub-contractors Donnybrook Interiors and Rod from our Rondo Network Partner store, Architectural Ceiling Systems, Rondo delivered the walls and ceilings for this unique \$15 million build.

The facility, designed by Gresley Abas Pty Ltd, boasts a state of the art, 14-foot diameter vertical glass chamber wind tunnel which simulates free fall parachuting in a safe all-weather environment. The venue operates as an entertainment and sporting venue as well as a tool for professional skydiving training.

As the building was quite unusual in its function, Rondo liaised directly with Nathan and John from Donnybrook Interiors and with Metrowest to provide a design for the external façade using 150mm stud to support 9mm Concrete Fibre Cement cladding, which was passed on to the projects structural engineer for approval.

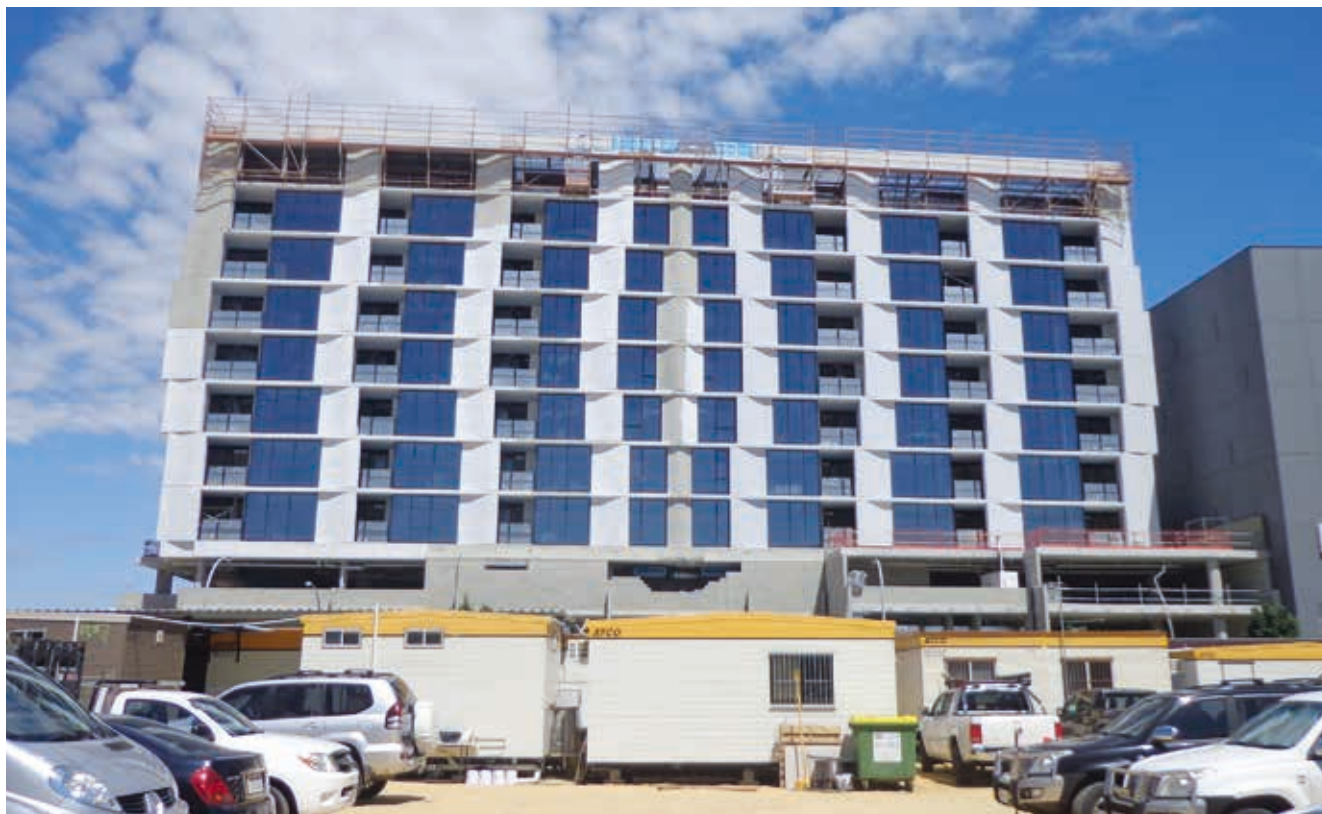
This unique project was completed in December 2016 and Rondo were thanked for their customer service (ease of installation) and reliability.



Rondo products supplied to this project include:

- 51, 76, 92mm Stud & Track for internal walls
- 150mm Stud and Track for the external façade
- KEY-LOCK® Concealed Ceiling System for the internal ceilings

Stirling Cross Apartments [WA]



STIRLING CROSS Apartments constructed by PROBUILD and contractor Ceilcon will make location 1 Sunray Drive, Innaloo, one of the most sought after addresses in Perth. This \$45 million development designed by architect firm Elenberg Fraser consists of three separate apartment buildings and is due for completion in September this year.

This project came with a very short construction timeline and to ensure all deadlines were met, drawdowns were set up for all Rondo products specified and Rondo coordinated with the Distributor and contractor to ensure product was available as required.

Rondos' Technical Team, headed by Dane Griffin, were tasked with providing the design specification for some particularly difficult fire-rated ceilings with a requirement for fire protection from above as well as below. This was achieved using fire tunnel designs utilising 150mm studs as the structural support. The Technical Team provided marked-up detailed technical drawings to illustrate how the construction was to be installed to the soffits, which also required ceiling openings to be created to ensure no loss of fire-rating.

Two of the project's apartment buildings, known as Tassells & Baumea, are for clients requiring 'long let' residences whilst the third building, Sunray is for short stay lets.

The completed project will have everything residents will need; not only will they live just across from a Westfield shopping centre, but also just a short walk from the train station, from where it is a seven-minute commute into the centre of Perth's CBD.

Rondo WA would also like to thank Wayne and Luke Gray from Ceilcon for providing the opportunity for us to work with them on such an interesting project.

Rondo products used on this project include:

- ***KEY-LOCK® Concealed Ceiling System***
- ***51mm, 64mm, 92mm, 150mm of Stud & Track***
- ***QUIET STUD® Acoustic Wall System***
- ***Shaftwall One Way Erected Wall Framing System***
- ***EXANGLE® Finishing Beads***
- ***Steel Angles - lightweight***

PRODUCT NEWS

When you need to frame a bulkhead, we have the solution



The construction of box type bulkheads to conceal services can be designed into a wall or ceiling, and are sometimes found necessary on site because:

- 1. An architectural feature requires the ceiling level to step up or down, with the bulkhead becoming an integral part of a feature ceiling design .*
- 2. Unavoidable situations have presented themselves and some pipework or a re-routed duct requires concealing.*

Bulkheads can be lined with simple flush plasterboard, constructed from acoustic ceiling panels or even clad with materials from timber panelling to figured marble.

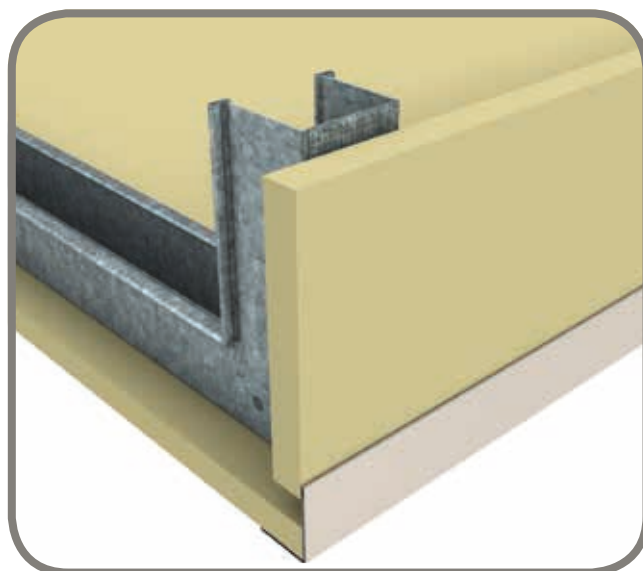
You can't normally line a bulkhead or indeed support it structurally without a support framework of some kind, and that's where we come in.

A simple change in the level of a plasterboard ceiling can be accommodated by using the same Rondo KEY-LOCK® or Rondo RAPID® Concealed Framing components that have been used to construct the adjacent ceiling.

RONDO KEY-LOCK® BULKHEAD SYSTEM

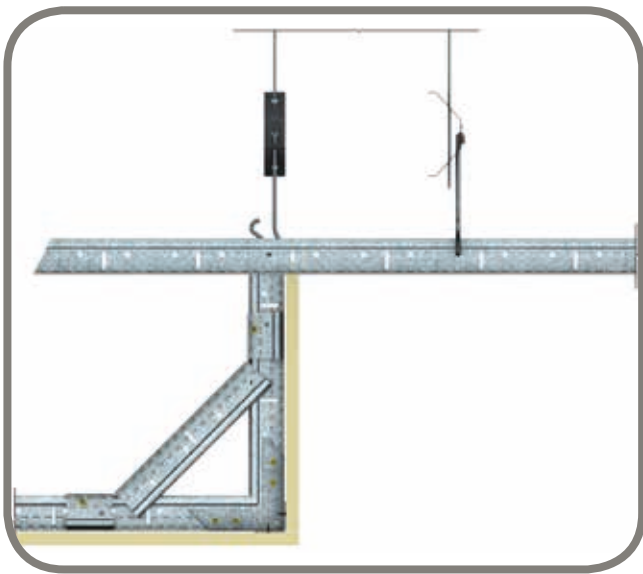
The Rondo KEY-LOCK® Bulkhead System allows easy, economical and true bulkhead corner finishes to be achieved by using furring channel along with concealed support clips and fixings.

The KEY-LOCK® Bulkhead System offers alternatives for non-fire-rated applications, but it is important to note that the maximum drop of bulkheads is not to exceed 1200mm, unless appropriately designed otherwise.



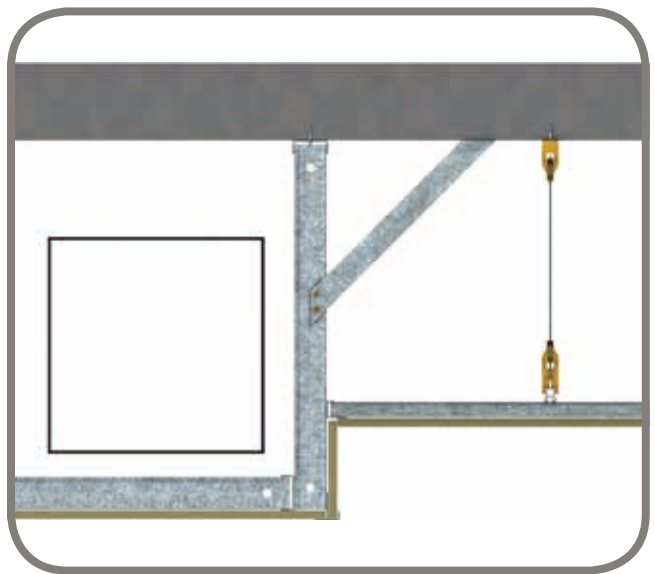
RONDO RAPID® BULKHEAD SYSTEM

The Rondo RAPID® Drywall System can be used for framing bulkheads in ceilings. Our RAPID® Bulkhead System uses standard RAP2 Cross Tees and Wall Trims, along with RAP46 Bulkhead Main Tee or RAP47 Bulkhead/Corridor Main Tee Strongback, and complementary angles. Bulkhead drops of up to 1600mm can be achieved using the Rondo RAPID® System. Refer to the Rondo RAPID® Drywall Grid System Design Manual for details.



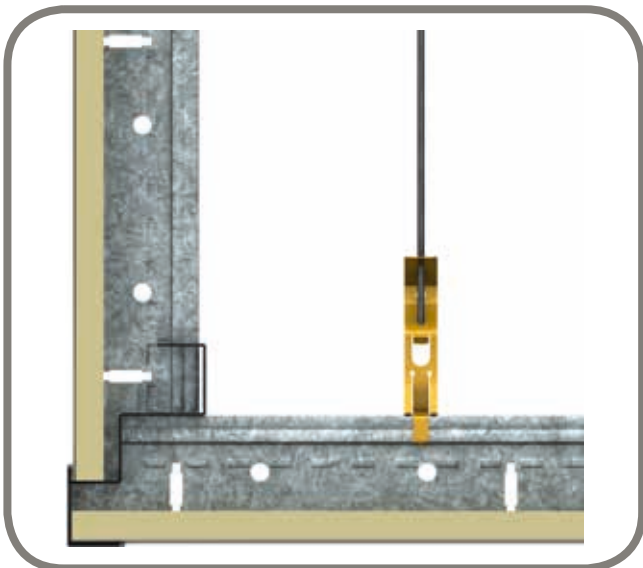
RONDO STEEL STUD & TRACK BULKHEAD SYSTEM

As we mentioned earlier, some bulkheads might be lined with heavy materials which will require the supporting framing to be braced off of the building structure and in that case, Rondo Steel Stud and Track is often the only way to go. In such cases, it is very important to build a structure that is safe and if you don't have an on-site structural engineer to provide a design for you then get in touch with us and we'll assist.



RONDO DUO® BULKHEAD SYSTEM

Even a drop-in exposed grid ceiling system can be adapted to work vertically with a variety of bulkhead components and trims, such as our DUO® Exposed Grid Ceiling System. The Rondo DUO® Bulkhead System uses standard Main Tee along with DUO5 Bulkhead Trim and support clips.



Rondo has even adapted its MAXIframe® System to support bulkheads in critical areas where accommodation of high dead loads and wind loads are necessary.

Whatever it is, we have the answer, so please feel free to contact us today or find your nearest Distributor within our Rondo Partner Network who can supply you with all your product needs.

3

REASONS Why It's a Risk to Substitute Steel Products in a System

There's no two ways about it, substituting other steel products into a Rondo wall or ceiling system can compromise the performance of the system, the safety of others, and your warranty.

Here's 3 reasons why you must never mix your products in a Rondo wall or ceiling system:

1 The system may not perform as intended



Some imported or locally manufactured ceiling or wall products may look like ours, but have a reduced zinc coating thickness which means they're less resistant to corrosion.

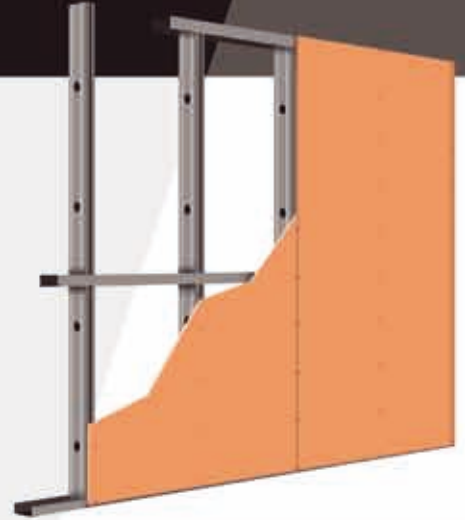


Our wall and ceiling products are extensively tested to perform as a system.



Swapping out our products with others may mean the system won't perform as intended.

Our systems are designed to meet relevant standards and code requirements and differing design criteria by others may mean they aren't up to spec.



2 The safety of others could be jeopardised



If the system doesn't perform as intended, a wall or ceiling system could potentially collapse and risk the safety of the building occupants.



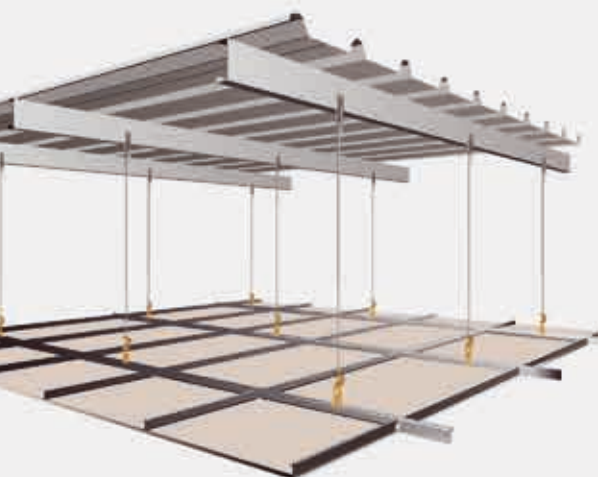
This is especially important when it comes to suspended ceilings, where a ceiling system collapse could lead to a devastating outcome.



Recent events have highlighted the significant safety risks associated with the use of non-compliant building products.



3 You'll void your Rondo Warranty



Our products are designed and tested to perform as a system and we back them with a quality guarantee and provide it in writing.



Replacing a product in a Rondo Wall or Ceiling System with another supplier's product will mean it's not what we've designed or tested, and therefore, it won't be covered by the Rondo Warranty.



For optimum performance and safety, and to ensure you are warranted for your job, only use Rondo products in your wall or ceiling system and purchase from our Rondo Partner Network.

UPDATES

Rondo becomes CPD accredited



CPD activities have long been important for architects as they allow them to keep up with their National Competency Standards in Architecture. They are intended to educate architects on innovative design solutions using the latest products and materials and of course the corresponding regulations that apply.

Architects are required to acquire a minimum of 20 points per annum, with at least 10 formal. As a registered CPD Point course provider in Australia (as accredited by AIS and AIA), we now currently offer architects one formal CPD Point for our “External Non Load Bearing Wall and Façade Framing Systems” course. This module covers:

- What it is
- Applications in which it can be used
- Advantages of lightweight steel in external façade applications
- Design considerations for external wall framing
- How wind behaves
- The impact of wind on corner zones and openings
- How major projects use external wall framing to achieve design intent



During the CPD Presentation, we’ll take you through two major projects, explain the briefs given, and detail how the system solved complex technical designs and provided onsite efficiencies.

The project case studies are *The William Apartments* in Melbourne, and *The Sunshine Coast University Hospital* in Queensland. Both projects benefited from the use of lightweight steel in the construction of external wall framing. This includes faster installations, greater wall heights, ability to meet wind load requirements, as well as the all-important project cost savings.

Architects can now register their interest to attend our CPD Presentations through our website, simply visit www.rondo.com.au/cpd

Rondo VIC’s New Site



After being in the planning stages for two and a half years, Rondo’s Victoria site has relocated to 1 Columbia Court Dandenong. And we are pleased to announce it occurred without a hitch during the Christmas/New Year break.

After being based at Mulgrave for 18 years it was time for a change, as with only 5000m², Rondo had literally outgrown their home.

The new Dandenong warehouse will enable Rondo to increase our stock levels, catering for current and future product demands, whilst at the same time creating a safer working environment for our employees.

With 8500m², Dandenong includes 6000m² undercover storage, office, warehouse and two canopies for loading and unloading of trucks. Dandenong has been designed with safety and efficiency in mind. For instance, there has been a strict traffic management and pedestrian plan put in place to eliminate pedestrian traffic within the warehouse.



With each of the premises Rondo develops being better than the last, Rondo is certain that our customers will come to appreciate the new site as much as the employees through the better efficiency and customer service it will allow us to provide.

UPDATES

Rondo's Partnership with KUC 2017

The year has barely begun but Rondo has been off to an incredible start lending a helping hand to charity partner Kids Under Cover wherever they can with the aim to reduce youth homelessness. If you'd like to know more about their work and how you can get involved, visit www.kuc.org.au

RONDO VICTORIA/TASMANIA GOLF CLASSIC

The Golf Classic was a great opportunity to raise awareness with Kerry Butcher from KUC joining the day as our guest speaker. Kerry was also the "eyes" at the "hole in one" 17th hole, making sure all is fair game. To make it even more special, every team has their photo taken at this hole with the KUC banner in tow.

After a long day, golfers Leigh Bomford, David Chudasko, Mike Turner and David Rodek cleaned up, winning the prestigious annual title and trophy.

Rondo and KUC would like thank all the event sponsors: Simon National Carriers, BlueScope Steel, USG Boral, BGC Plasterboard and Gyprock Trade. The VIC Golf Classic raised \$1,926 for Kids Under Cover.

CUBBY HOUSE CHALLENGE

For the second year in a row we proudly sponsored the Kids Under Cover Cubby House Challenge. This incredible event brings together over 200 leading members of the Building and Construction industry with a shared interest in preventing youth homelessness.

Five teams created the best cubby house they could possibly imagine. They were tasked with designing, building, decorating and donating dream cubbies which are exhibited in a village at the Melbourne International Flower and Garden Show at Carlton Gardens in Victoria. Australia's Best Cubby was awarded to Glowby Playce and Agency of Sculpture, and this year the event raised over \$162,500, smashing all previous records.



ADELAIDE FRINGE FESTIVAL

Next up, we headed to South Australia for the Adelaide Fringe Festival where Rondo staff and customers volunteered at the Garden on March 5.

Kids Under Cover were the official charity partner for the day and volunteers took on the challenge of collecting gold coin donations from everyone attending.

The day raised \$1000 which is enough to fully fund a KUC scholarship. A great effort by Rondo State Manager Ivar Spanovskis, Rondo Technical Sales Representative Graham Eldridge and customer Gary Powell from GMR Interiors who gave up their Sunday afternoon to help KUC make a difference.



RONDO QLD RACE DAY

This year Rondo hosted a race day in QLD for KUC. Rondo was the main sponsor of the event held at the QLD Turf Club. Raising \$22,500 with Rondo customers and suppliers, the day was a great success (even if we were worried that we would initially be washed out by the torrential rain that came before us!).

Mark Forbes did a fantastic job as the MC and led many great games throughout, including trivia, fashions on the field and Punters Club. Kerry Butcher from KUC presented to all attendees on KUC'S work and their history of involvement with Rondo.

It was an honour to present Kerry with the big cheque and we are sure the funds will be used well in continuing KUC'S great work.



A big thank you to all who made the day possible, including:

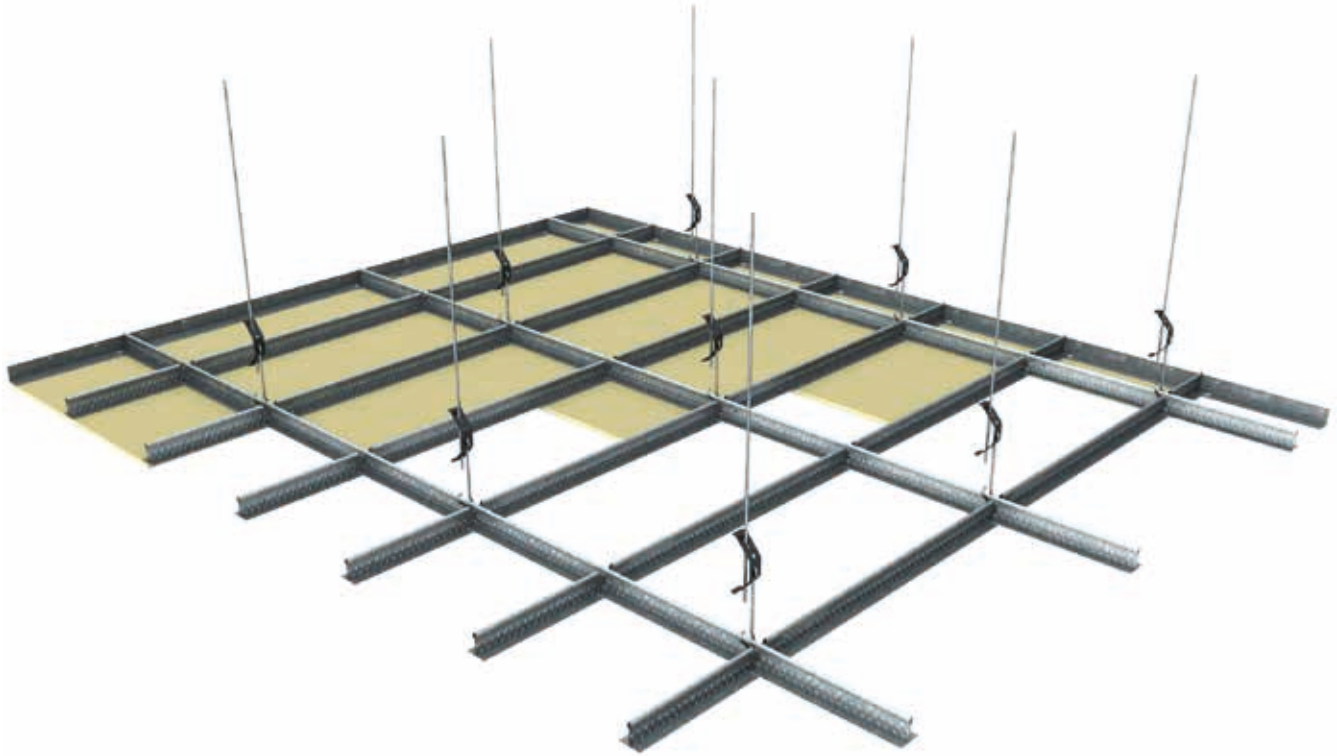
- CSR Gyprock
- CSR Ceilector
- CSR Cemintel
- A1 Interiors
- Auzline
- Barry Hamilton & Sons Transport
- North Australian Contracting
- Wadsworth Contracting
- Superior Wall & Ceilings Qld



**Building foundations
to prevent youth
homelessness**

RONDO RAPID[®]

Drywall Grid System



Quick and Simple. Without settling for less.

New Rondo RAPID[®] is the latest addition to the Rondo family of exceptional ceiling systems. Which means you can now get all of the Rondo advantages in a quick and simple ceiling system that is ideal for small rooms and corridors.

And when you have a more complex job, the Rondo range of ceiling systems covers everything... right up to acoustic and seismic systems.





TO WIN, POST A PICTURE TO INSTAGRAM

Just tag a photo of Rondo product on site or an architectural drawing that shows Rondo product using **#rondobestbuilding** on Instagram. Entries close June 30, 2017.

The lucky winner will be announced July 1, 2017, via Instagram.

RONDO[®]
www.rondoglobal.com

The sign of a great partnership



When you see this sign, you can be sure you're dealing with a trusted partner of Rondo. Someone with the knowledge and technical expertise you need to help you choose the right system for your project.

Best of all, you get the peace of mind that comes with every Rondo product – you will know it is 100% Code Compliant and backed by our written warranty.

And with over 450 Rondo Network Partners located across Australia, New Zealand, Asia and the Middle East, you'll never have a problem sourcing what you need and getting it to where you need it.

RONDO[®]
www.rondoglobal.com